



**BLUE  
MISSION  
BANOS**

**1st MISSION ARENA**  
14-16 November 2023 | Gothenburg, SE

# OCEAN MULTI-USE BLUEPRINT & TRANSFERABILITY

Ivana Lukic – SUBMARINER Network for Blue Growth EEIG

**THEME: Ocean Multi-Use - UNITED Final Event**

[in](#) [🐦](#) [#MissionArenaBANOS1](#)



Funded by  
the European Union

## AGENDA

### HALL 1

### OCEAN MULTI-USE BLUEPRINT & TRANSFERABILITY

This workshop will reveal the Ocean Multi-Use Blueprint and elucidate its practical applications. Participants will gain insights from planning authorities and industry representatives regarding the adaptability of the suggested multi-use solutions. The panel will discuss how the blueprint solutions can be applied in the Mission Arena Region, among others.

**9.00 –  
9.20**

**Opening remarks: Ocean Multi-Use Blueprints**  
Ivana Lukic - SUBMARINER Network for Blue Growth EEIG

**9.20 –  
9.40**

**Announcement of the ULTFARMS Associated Regions**  
Alex Ziemba - Deltares

**9.40 –  
10.15**

PANEL: Transferability of the multi-use solutions to the Mission Arena Region

1. Bettina Käppeler - German Federal Maritime and Hydrographic Agency
2. Anne Gunnäs - Swedish Lysekil municipality
3. Emil Gejrot - Nordic Innovation
4. Simon Johansson - Nordic Seafarm
5. Andrea Fischel - ORSTED

## Why do we need a ‚Compendium of Multi-Use Blueprints‘?

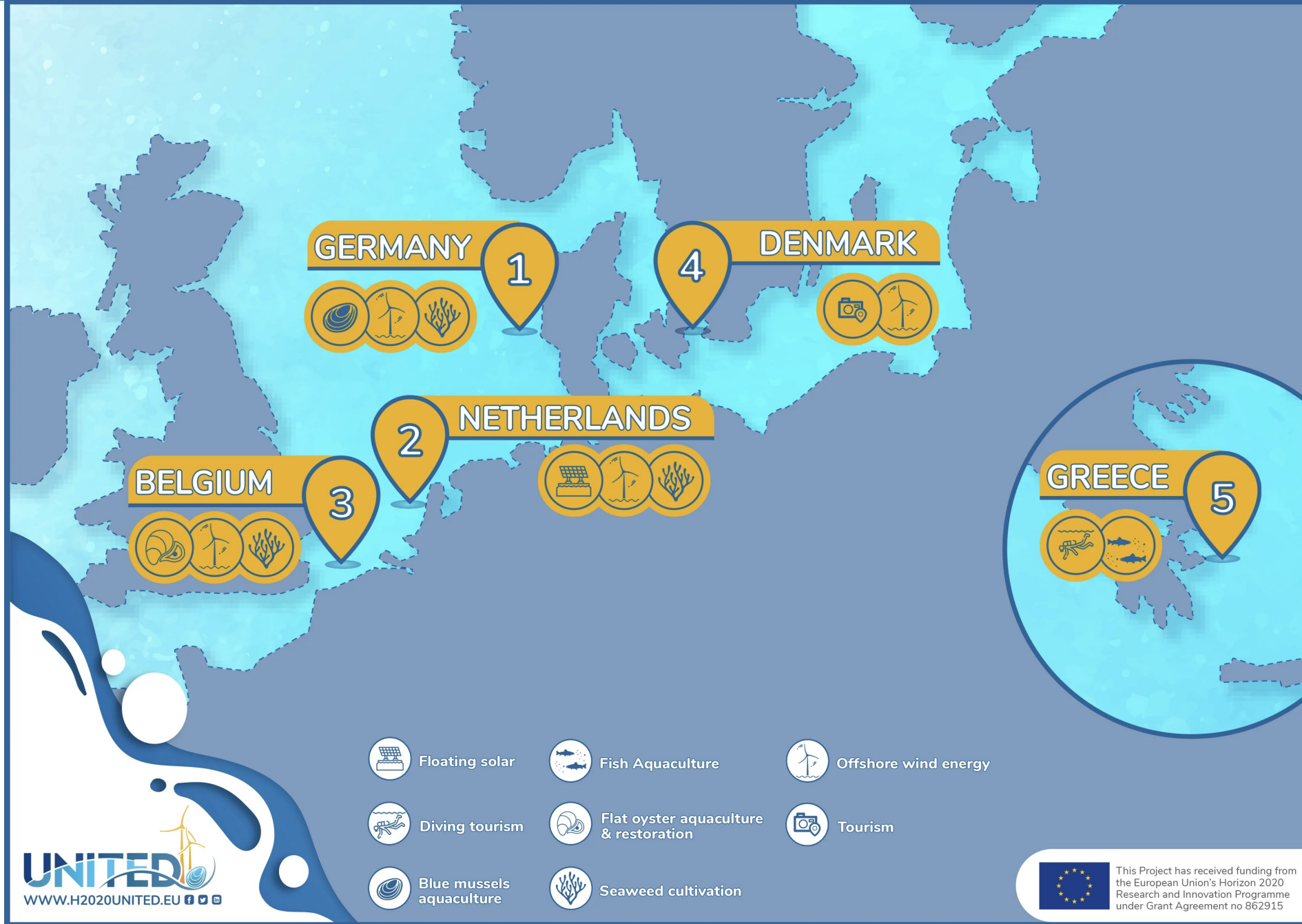
- **Designed to assist planners and industry stakeholders** in making informed decisions about the most effective functional and spatial arrangement of diverse ocean activities.
- **Ultimate practical ‘How To’ guide to ocean multi-use development**, taking into account crucial dimensions →



# BLUEPRINT EVIDENCE BASE

4 years

5 multi-use pilots  
demonstrated  
in real environment



## UNITED BLUEPRINTS



# Offshore Wind and Aquaculture and Nature Restoration



## SITING TOOLS

- for mussels and seaweed cultivation  
- for flat oyster habitat restoration

## 'AREA PASSPORT'

to indicate where and what form of multi-use is possible.

## REGULATORY INCENTIVES

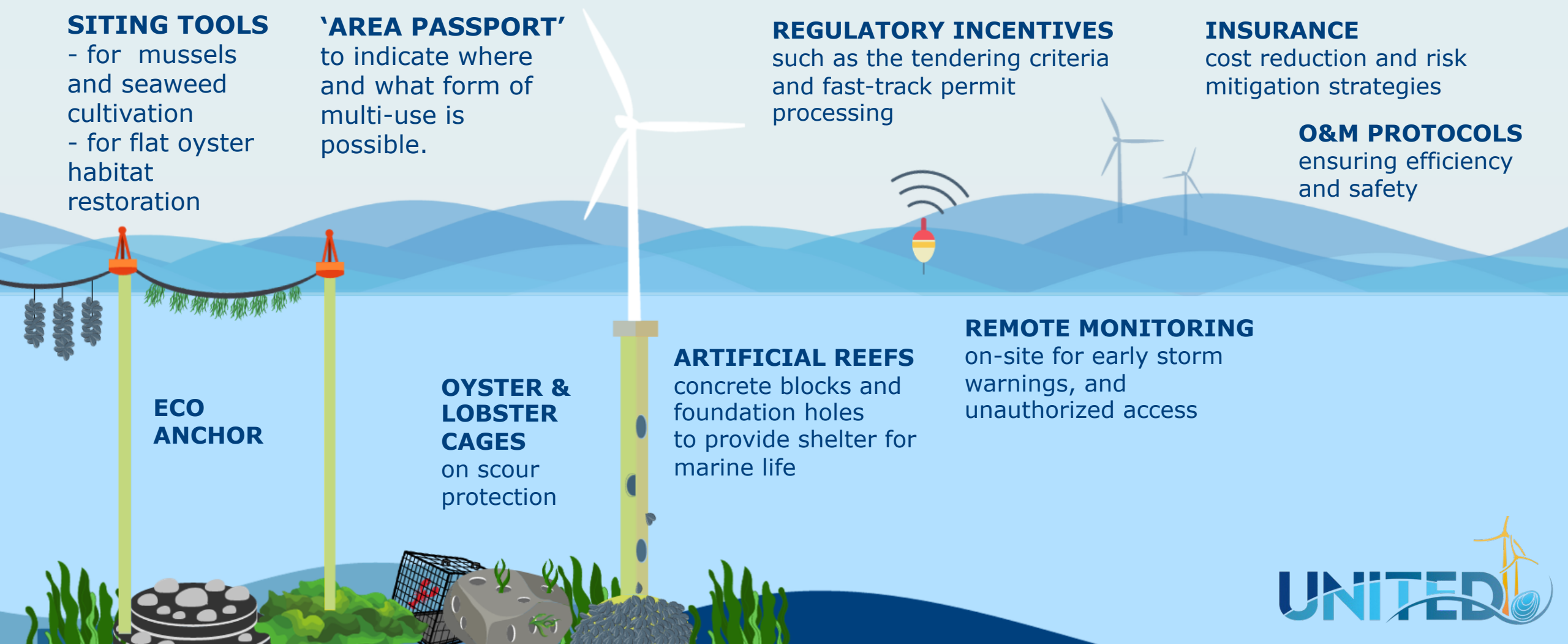
such as the tendering criteria and fast-track permit processing

## INSURANCE

cost reduction and risk mitigation strategies

## O&M PROTOCOLS

ensuring efficiency and safety



## ECO ANCHOR

## OYSTER & LOBSTER CAGES

on scour protection

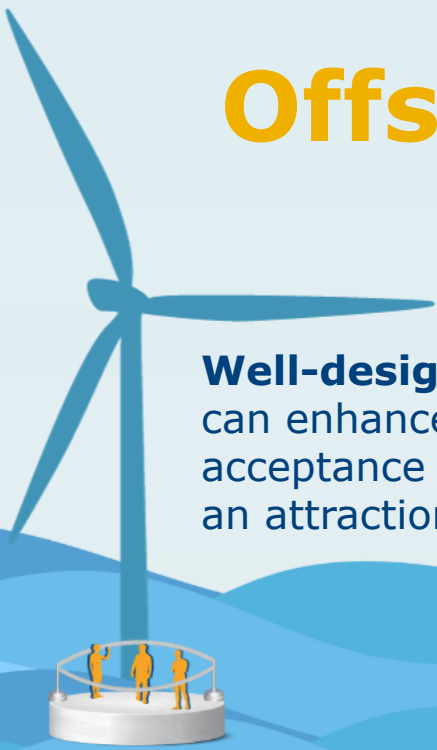
## ARTIFICIAL REEFS

concrete blocks and foundation holes to provide shelter for marine life


## REMOTE MONITORING

on-site for early storm warnings, and unauthorized access


# Offshore Wind and Tourism



**Well-designed layout**  
can enhance local  
acceptance and become  
an attraction




**Knowledgeable  
guides**  
for informing  
visitors and  
guiding them up  
the nacelle



**Well  
equipped  
boat**  
with its own  
ladder for  
boarding the  
platform

**Cooperative ownership**  
fosters community  
engagement and investment

**Health and safety  
protocols** to be  
followed when  
accessing the  
safety zone and  
turbine



**Innovative marketing  
strategy**  
involving the placement of QR  
codes in maritime museums and  
universities and offering virtual  
tours of the windfarm.



# Tourism and Aquaculture

## Service development

including the adventure and education packaged for group retreats



## Advanced remote monitoring

to increase efficiency of the farm and ensure surveillance of the scuba diving activities (sensors, cameras, ROV)

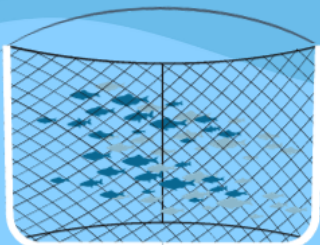
## Coastal plans and development strategies

that encourage multi-use

## Protocol for food safety risk

enabling access around or in the farm

**Insurance**  
good track record of the diving company



## Innovative marketing strategy

involving the placement of QR codes in local restaurants, hotels and offering virtual tours







**Subscribe to  
the Ocean Multi-Use Newsletter  
to get informed once the BLUEPRINT is  
published (Jan 2024)**

**SCAN ME!**





WWW.H2020UNITED.EU   



**Ivana Lukic**

il@sustainable-projects.eu