



AQUAFOUNDERS  
CAPITAL

# Introduction to Aquafounders Capital

November 2023

# Leveraging the unique first-hand experience of its founders



## Ohad Maiman

*Managing Partner AquaFounders Capital*

---

### Previous Experience

Founder/Former CEO The Kingfish Company (EURONEXT:KING)

### Achievements

The Kingfish Company is a first mover, operating at the cutting-edge of sustainable, land-based, high value marine aquaculture in the EU and the US; Maiman has been responsible for the complete development of the company as CEO (2015-2022, from inception, through funding, proof of concept and scale up, to the listing of the company on the Oslo Euronext Growth stock exchange

### # of Years

> 10 years in the land-based aquaculture industry

### Other Positions

- Board member – ReelData AI
- Chairman of the Board – Biofishency Ltd.



## Thue Holm

*Managing Partner AquaFounders Capital*

---

### Previous Experience

Founder/former CTO Atlantic Sapphire (EURONEXT:ASA)

### Achievements

Atlantic Sapphire is the largest global land-based aquaculture company in the world with a strong social and environmental focus, and growing fast in North America and Europe, listed in the Oslo Stock Exchange; Holm has strong expertise in both the farming and technology side of developing land-based companies, having managed all innovations and technological developments of Atlantic Sapphire

### # of Years

Ca. 20 years of experience in the land-based aquaculture industry

### Other Positions

- Co-owner and Chairman – Fluebing aps
- Board member – Plast Solutions ApS

# AquaFounders Vision & Mission



AQUAFOUNDERS  
CAPITAL

## VISION

Aim to enable the next leap in fish farming by transitioning it onto land, igniting innovation, and advocating for environmentally friendly practices to protect our oceans and meet the increasing need of feeding a growing population.

## MISSION

As founders, fish farmers, and entrepreneurs, our mission is to drive the progress of the sustainable land-based aquaculture sector.

We are dedicated to developing and investing in cutting-edge technologies, innovative solutions, and untapped species that can foster the industry's growth.

By developing and enabling responsible businesses in the Land Based sector, we help to alleviate the strain on our oceans and safeguard wild fish populations and provide unparalleled access for our investors into a unique growth sector, while meeting the surging demand for seafood and upholding our environmental responsibilities.

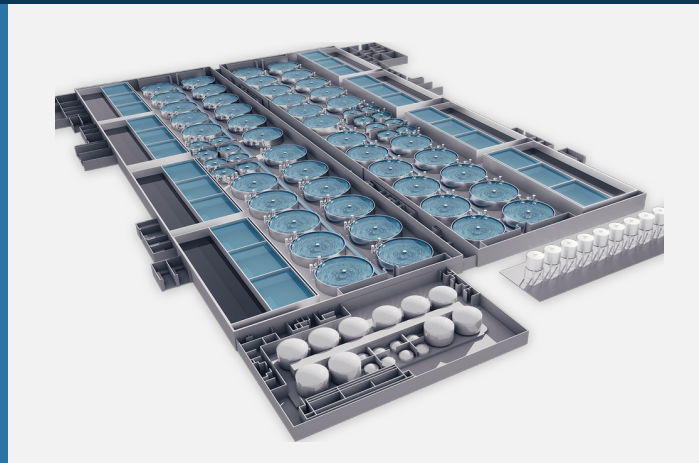
# Key target Segments in the Land Based Sector

We focus on two critical segments within the Land Based sector, enabling an investment hedge across the value chain, with the aim to develop and invest in and enable the creation of significant segment leading companies

## FARM IN A BOX

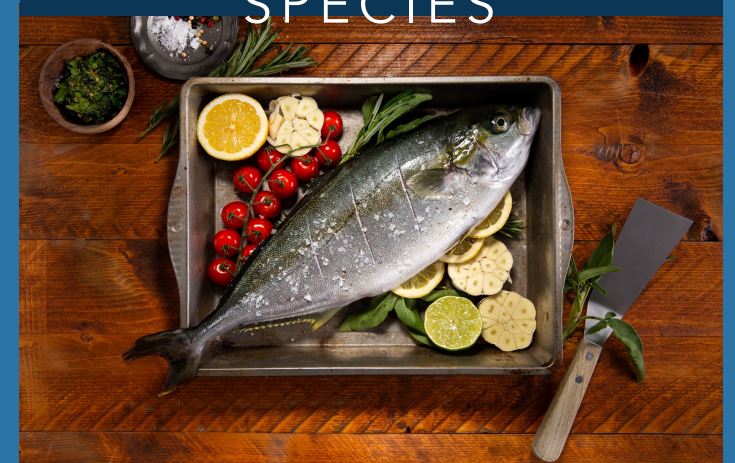


Precision farming and optimal OS



Innovative Hardware Solutions

## HIGH VALUE SPECIES



Unique high value farming business cases