



# PREP4BLUE

METHODS AND TOOLS FOR MISSION OCEAN & WATERS

## WP4 – Knowledge Management for R&I core: Identifying and Transferring Knowledge/ Solutions to Support the Mission

*Caecilia Manago, ERINN Innovation Ltd.*



A 'Mission Restore our Ocean and Waters' initiative.



Funded by the European Union, through its Horizon Europe Program, Grant No. 101056957 (PREP4BLUE). Views and opinions expressed are however those of the author(s) only and do not necessarily reflect those of the European Union or of the granting authority, the European Climate, Infrastructure and Environment Executive Agency (CINEA). Neither the European Union nor the granting authority can be held responsible for them.



## PREP4BLUE Objectives

PREP4BLUE's objective is to support the R&I goals of the 'Mission: Restore our Ocean & Waters' and facilitate its successful implementation, especially during this first phase (2022-2025). Through a series of pilots at the Mission's demonstrator or 'Lighthouse' sites, PREP4BLUE will develop tools, guidelines and methodologies to be used by stakeholders on all Mission funded projects. This co-creation approach will optimise and create synthesis across Mission activities and solutions, ensuring cohesion and connectivity across sectors, and between European citizens and stakeholders.



@PREP4BLUE  
@ourmissionocean



prep4blue.eu  
MissionOceanWaters.eu

# Background

The European Green Deal reflects **need for systemic change** and puts sustainability at the heart of EU policy-making. But we are still in the process of turning such ambitions into policies and actions, and “**we currently understand the challenges better than we understand already available solutions and their implementation**”.



Need for  
transformative  
solutions



To address this  
need

... we need to go beyond a focus on what knowledge is required and **better understand how to further strengthen knowledge analysis, uptake and use across societies** to support the transformative systemic changes at the speed and scale needed.



# Philosophy

- **Efficient Knowledge Transfer is about planning/carrying out activities that are:**
- **Based on an Informed Pathway to Impact**
  - Identifies Specific Users to target
  - **Application Driven**
  - Measurable and Measured
- **Tailored to a specific Knowledge Output**



@PREP4BLUE  
@ourmissionocean



prep4blue.eu  
MissionOceanWaters.eu



# ERINN's Knowledge Transfer Methodology



Identifies units of knowledge within a research project



Describes knowledge in sufficient detail for analysis by experts



Analysis process enables the development of a specific **Pathway to Impact**



Enables the identification of user(s) and application(s)



Develops customised transfer plans per user/application (s)



Contains Measurement of Success indicators



Is systematic, replicable & effective



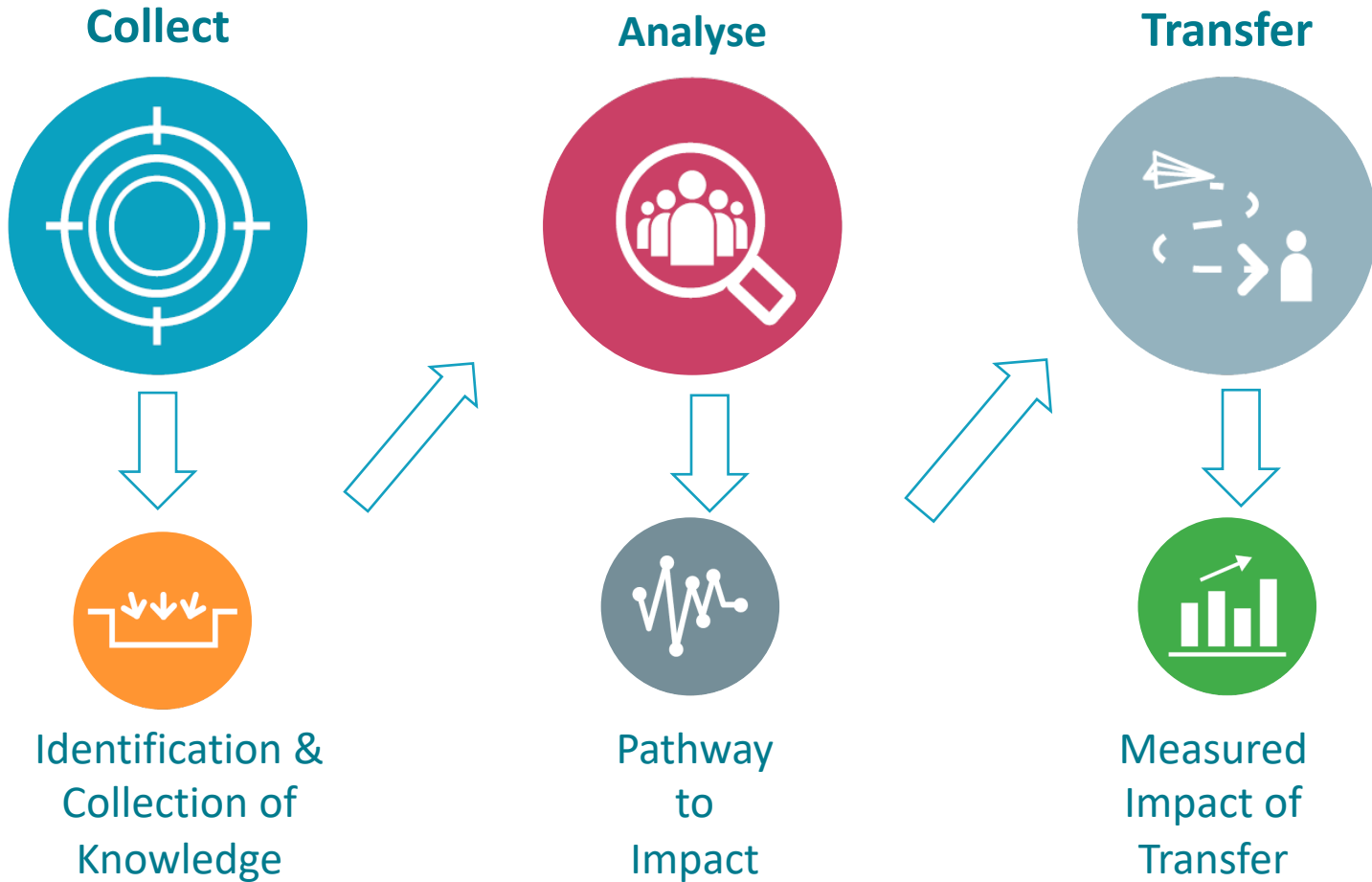
@PREP4BLUE  
@ourmissionocean



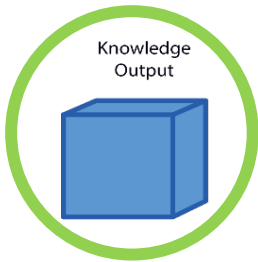
prep4blue.eu  
MissionOceanWaters.eu

# Task 4.3

## Knowledge Transfer (KT) in PREP4BLUE



# Focus on Units of Knowledge

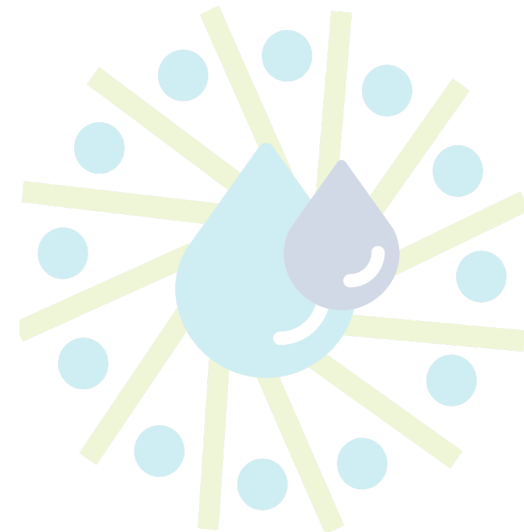


## A Knowledge Output is:

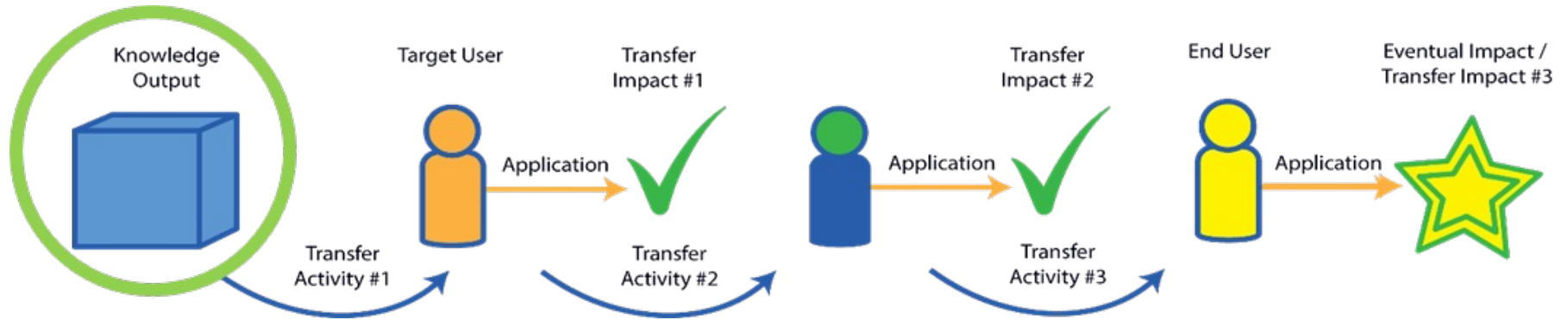
A unit of knowledge or learning generated by or through research activity. They are not limited to de-novo or pioneering discoveries but may also include new methodologies/processes, adaptations, insights, alternative applications of prior know-how/ knowledge.

## A Knowledge Output is not:

- A theory, hypothesis or idea.
- Potential results or outputs.
- A Scientific publication, deliverables or report  
– BUT these may contain one or multiples KOs.



# Focus on Units of Knowledge



For Knowledge/Solutions to have an impact/ to transform, the Knowledge/Solution needs to be applied.



@PREP4BLUE  
@ourmissionocean



prep4blue.eu  
MissionOceanWaters.eu



# THANK YOU

**Caecilia Manago**  
[caecilia@erinn.eu](mailto:caecilia@erinn.eu)



[@PREP4BLUE](https://twitter.com/PREP4BLUE)  
[@eumissionocean](https://twitter.com/eumissionocean)



[prep4blue.eu](http://prep4blue.eu)  
[MissionOceanWaters.eu](http://MissionOceanWaters.eu)

