

LTA in Lolland-Falster

Navigating the political landscape following the recent publication of the 'Marine Spatial Planning' for Denmark

THEME: The do and don'ts of permits for low-trophic aquaculture farming

ABOUT BUSINESS LOLLAND-FALSTER

Business Lolland-Falster is the business world's- and the municipalities development organisation in Lolland-Falster.

The 5 core tasks of Business Lolland-Falster



Development of
new and existing
businesses



Attraction of
businesses and
investments



Junction point
for business-
and tourism
development



Safeguarding
the interests of
businesses and
authorities



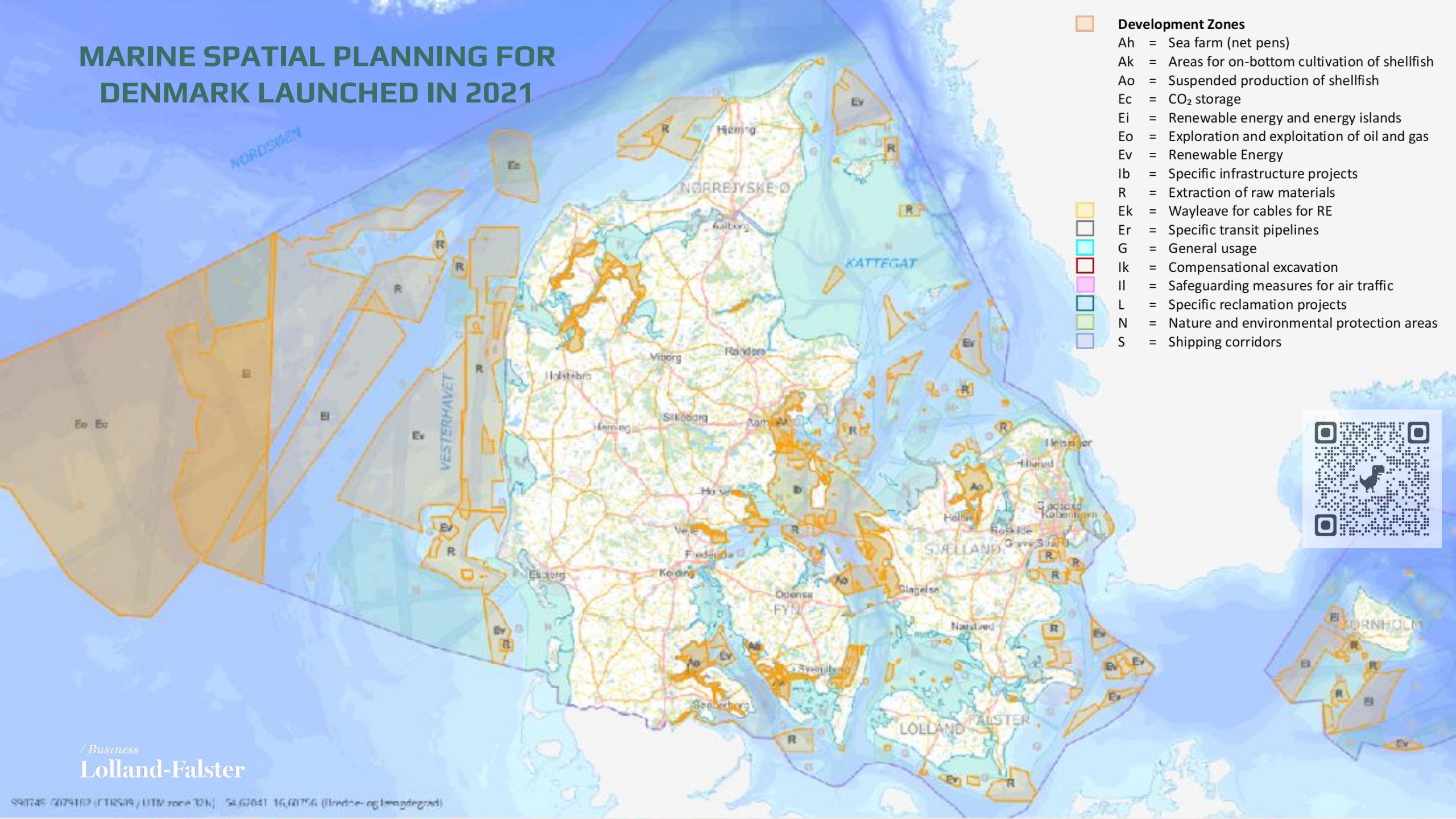
Management of
the largest
business network
in Lolland-Falster
(~500 members)

Mussel & Oyster Cultivation Permits



**No new applications
from 1st July 2021!**

MARINE SPATIAL PLANNING FOR DENMARK LAUNCHED IN 2021

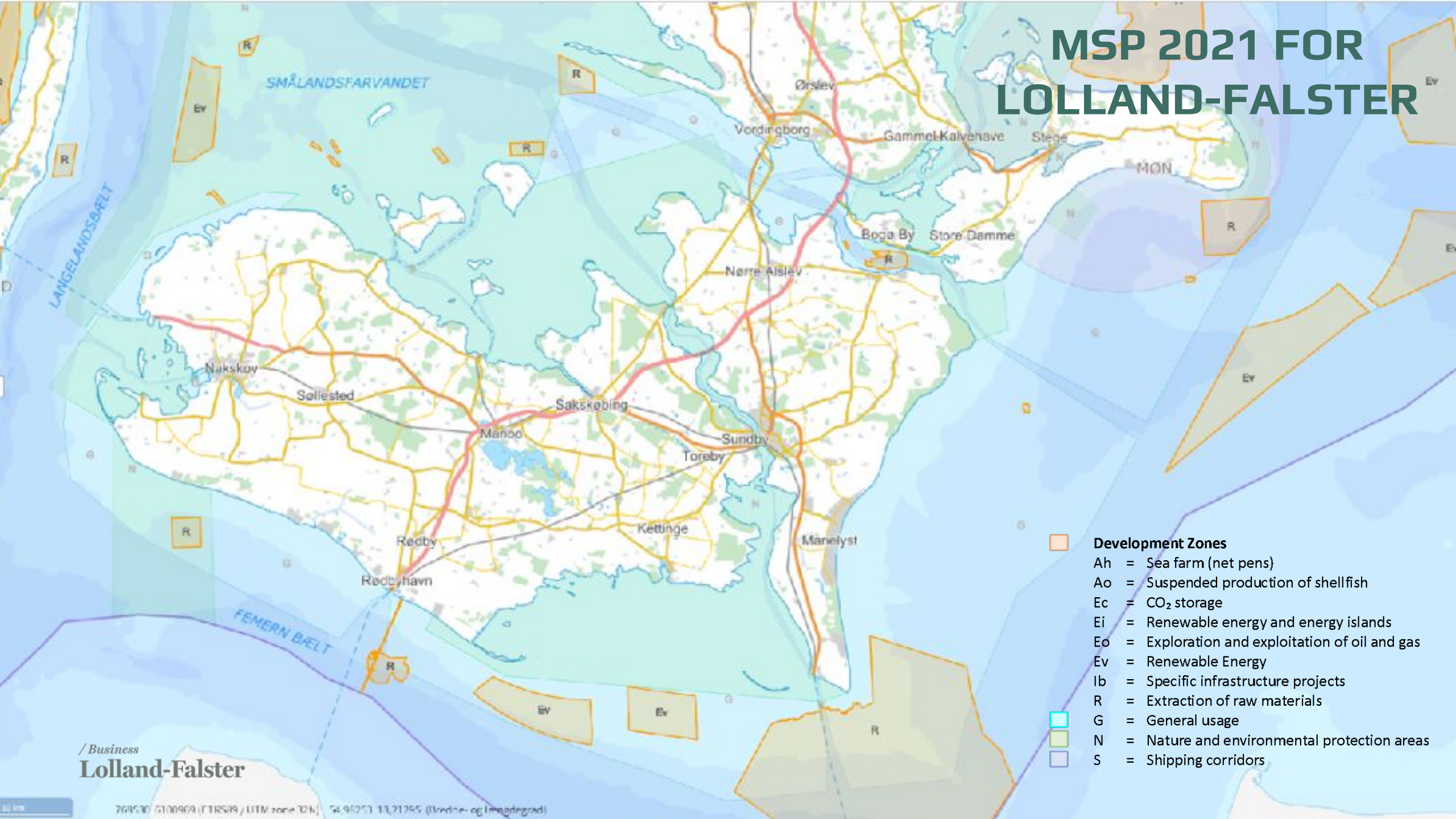


- Development Zones**
- Ah = Sea farm (net pens)
 - Ak = Areas for on-bottom cultivation of shellfish
 - Ao = Suspended production of shellfish
 - Ec = CO₂ storage
 - Ei = Renewable energy and energy islands
 - Eo = Exploration and exploitation of oil and gas
 - Ev = Renewable Energy
 - Ib = Specific infrastructure projects
 - R = Extraction of raw materials
 - Ek = Wayleave for cables for RE
 - Er = Specific transit pipelines
 - G = General usage
 - Ik = Compensational excavation
 - Il = Safeguarding measures for air traffic
 - L = Specific reclamation projects
 - N = Nature and environmental protection areas
 - S = Shipping corridors



/ Business
Lolland-Falster

MSP 2021 FOR LOLLAND-FALSTER



- Development Zones**
- Ah = Sea farm (net pens)
 - Ao = Suspended production of shellfish
 - Ec = CO₂ storage
 - Ei = Renewable energy and energy islands
 - Eo = Exploration and exploitation of oil and gas
 - Ev = Renewable Energy
 - Ib = Specific infrastructure projects
 - R = Extraction of raw materials
 - G = General usage
 - N = Nature and environmental protection areas
 - S = Shipping corridors

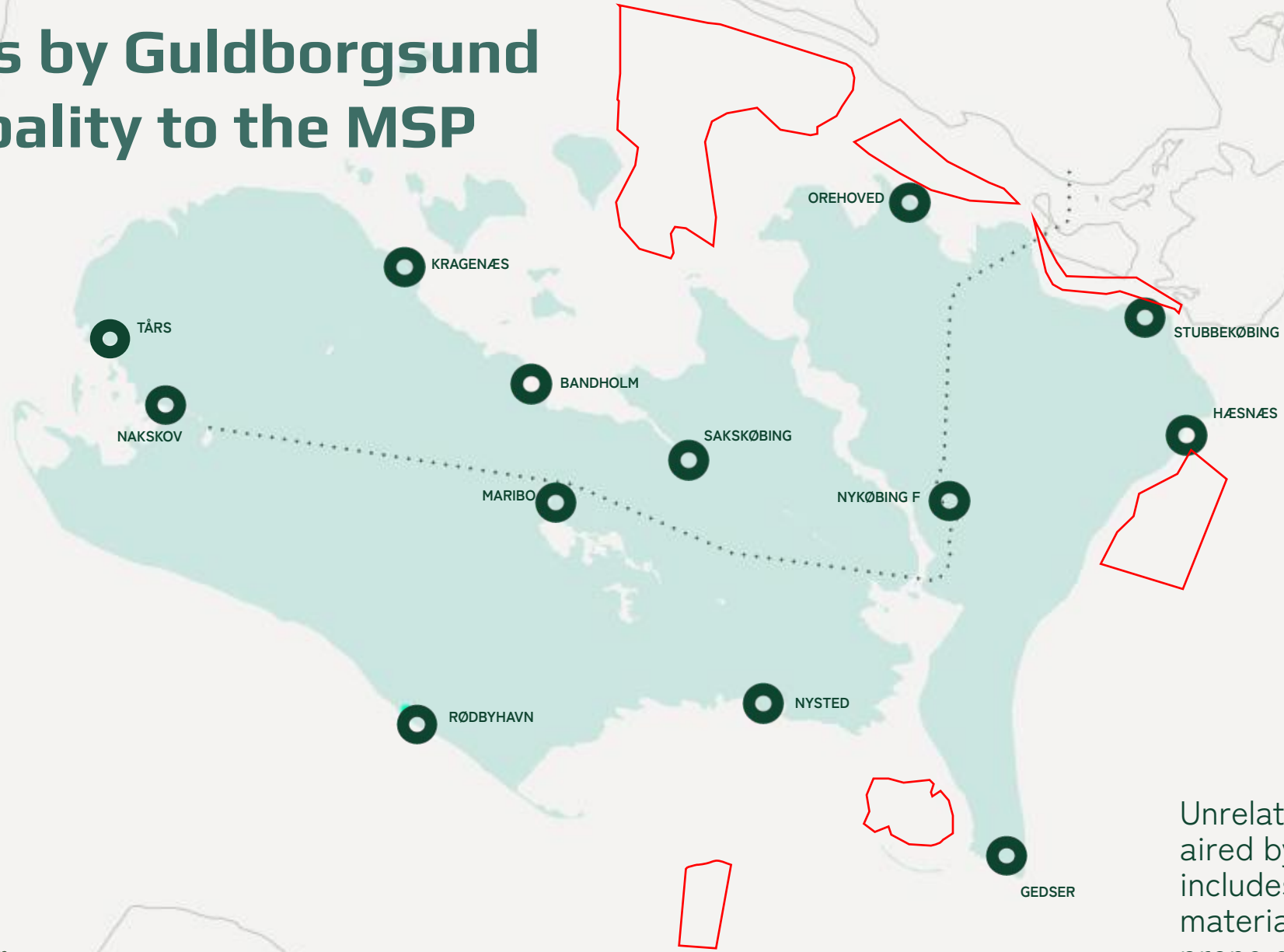
/Business
Lolland-Falster

Potential sites shortlisted by Blue Research



Lolland-Falster is covered by two municipalities, 'Lolland' in the West and 'Guldborgsund' in the East.

Sites submitted with comments by Guldborgsund Municipality to the MSP



Unrelated (to LTA) concerns aired by Guldborgsund includes extraction of raw materials close to an erosion prone coastline.



AQUACULTURE IN LOLLAND-FALSTER

THE NEXT STEPS

The Technical- & Environmental departments of the two municipalities are willing to work with us, if we can present:

- A Business Case
- A Potential Investor

NIFIMU

REMOVAL OF NUTRIENTS FROM RAS BY USE OF BLUE MUSSELS – EFFECTIVENESS, ENVIRONMENTAL ASPECTS AND ADMINISTRATION

Mapping out of the potential for utilisation of blue mussels for water purification, for land-based cultivation of Salmon (RAS).



Miljø- og
Fødevareministeriet
Fiskeristyrelsen



LTA Potential

NO NEED TO STOP AT BLUE MUSSELS

Besides mussels, there is a local potential for cultivation of other LTAs.

Business Lolland-Falster is ready to assist any business, startup or pilot project who sees the potential in Lolland-Falster and our surrounding waters.

LOLLAND-FALSTER

THANK YOU & WELCOME TO LOLLAND-FALSTER.

